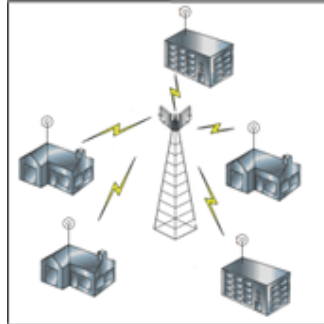


Product Highlights and Advantages



- Licence Exempt ETSI and FCC 5GHz Frequency – eliminates regulatory delays.
- 11 (ETSI), 4 (United Kingdom), 13 (USA), 236 (Unregulated Countries) non-overlapping channels allows many units to be deployed in the same area.
- User selectable channel width – 5 MHz, 10 MHz, 20 MHz or 40 MHz for scalable deployment and interference resiliency.
- Up to 25 MBps TCP/IP speed and up to 10000 packets per second.
- Next day deployment enables rapid service activation and payback.
- Cost effective alternative to leased lines.
- Outstanding software features: bridging, routing, NAT routing, CPE and PtP Bridge modes, SNMP, web management, advanced QOS, DHCP client/server, firewall, PPPoE client and high grade encryption.
- Backward compatible with other vendors 802.11a compliant devices.
- Optimal cost / performance ratio: highly cost efficient solution.
- Dynamic Frequency Selection (DFS) complies with ETSI EN 301 893 and OFCOM regulations to allow co-existence with Radar systems.
- Robust outdoor architecture: ensures unprecedented range and reliability, minimizes RF cable loss connecting to antenna thus providing outstanding performance and communication distance.
- Superior Atheros XR™ AR5006XS powered OFDM radio – enables NLOS (near line of sight) operation in dense urban environments.
- Non-compromising security - over the air 128 bit key AES encryption.
- Compact integrated solution – easy to install and operate.

The OSBRIDGE 5GXi, a member of OSBRIDGE products family, is a high performance 5GHz outdoor wireless client bridge designed to provide secure and reliable point to multipoint operation for Carriers, Internet Service Providers, Business Enterprises and Government organisations.



The OSBRIDGE 5GXi is capable of operating as wireless router or multi-mac bridge to OSBRIDGE 5G and standard 802.11a Access Points, supporting up to 25 Mbps Net Throughput over its air interface. The OSBRIDGE 5GXi leverages both robust outdoor technologies and Orthogonal Frequency

Division Multiplexing (OFDM) modulation in the same product - with features such as Forward Error Correction coding, used to combat multi-path and noisy environments, the product operates seamlessly and efficiently in challenging environments with stable throughput. The system also features advanced algorithms for automatic selection of modulation schemes to maximize the data rate and improve spectral efficiency using latest technology based on Atheros® AR5006XS Radio Modules. These inherent advantages of the OSBRIDGE 5GXi enable service providers to provide an effective PtMP solution to a significantly higher subscriber base that would otherwise be inaccessible.



Using Features such as Packet Aggregation two OSBRIDGE 5GXi devices operating as PtP bridges can handle up to 10000 packets per second. Combining high frequency reuse, selectable channel width with advanced interference management and immunity techniques, the OSBRIDGE 5GXi bridges conserve valuable spectrum by allowing service provider to cover an extensive geographical area with a minimum number of channels.

While operating with OSBRIDGE 5G base station the OSBRIDGE 5GXi device can be configured to utilize proprietary polling protocol that overrides shortages of the standard 802.11a mode. OSBRIDGE proprietary WPM (Wireless Polling MAC) is a full featured TDMA/TDD protocol implementation on top of Atheros® AR5006XS hardware, using Packet Aggregation, Adaptive Polling Algorithm and disabling of the CSMA Backoff Mechanism. WPM also provides link adaptation technology and improves bandwidth, robustness, and overall performance for each subscriber.

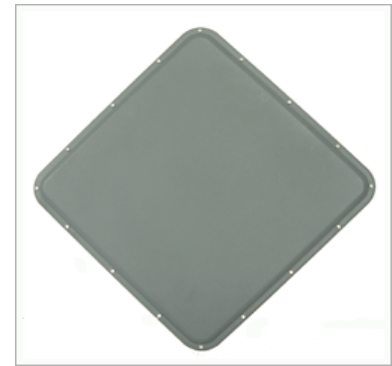


OSBRIDGE 5GXi software features such as bridging, routing, NAT routing, CPE and PtP Bridge modes, SNMP, web management, advanced QOS, DHCP client/server, firewall, PPPoE client, high grade encryption, port forwarding, remote syslog and built in troubleshoot utilities make the OSBRIDGE 5GXi the most flexible and cost effective broadband wireless CPE platform available today.

All OSBRIDGE 5GXi products are robust outdoor units, that are built to perform in difficult climatic environments and withstand even the harshest weather conditions. Built in passive Power over

Ethernet system allows only one ethernet cable to be used for both data and power transmission for up to 200 feet.

OSBRIDGE 5GXi Technical Specifications



Interface

Ethernet Interface	100 base-T Ethernet (RJ-45) with PoE
Wired LAN Protocol	IEEE 802.3 (CSMA/CD)
Wireless Interface	OFDM, TDD
Wireless LAN Protocol	IEEE 802.11a, Atheros 802.11a Turbo, WPM (Wireless Polling MAC)

Radio

Supported Frequencies	Europe (ETSI): 5500-5700 MHz (11 channels) with DFS (Dynamic Frequency Selection) USA (FCC): 5180-5320 MHz (8 channels), 5745-5825 MHz (5 channels) UK (OFCOM FWA): 5735-5835 MHz (4 channels) with DFS (Dynamic Frequency Selection) Africa&Asia (OTHER): 4920-6100 MHz (236 channels, 5MHz step)
Modulation Technique	BPSK, QPSK, 16QAM, 64QAM
Channel Width	User Selectable – 802.11a: 20 MHz, 10 MHz or 5 MHz, 802.11a Turbo: 40 MHz
Output Power	ETSI: ≤ 30 dBm EIRP OFCOM: ≤ 33 dBm EIRP FCC, Africa: ≤ 40 dBm EIRP
Bit Data Rate	54 Mbps 48 Mbps 36 Mbps 24 Mbps 18 Mbps 12 Mbps 9 Mbps 6 Mbps
Receive Threshold (including built-in antenna)	-95 dBm -98 dBm -103 dBm -106 dBm -110 dBm -111 dBm -112 dBm -114 dBm

System

Processor	ADM5120 175MHz MIPS 4Kc Processor with Embedded Cache
Memory	2MB NOR FLASH, 16MB SDRAM
RF Module	Atheros AR5006XS with XR Technology

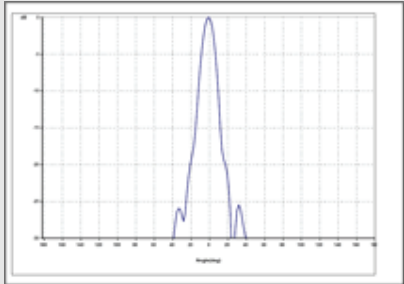
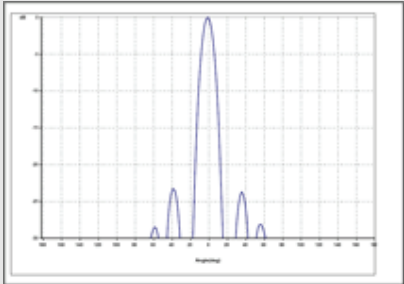
Software

Security	Association Protocol – ESSID, WEP 40/128, AES
Features	Bridge, Router, NAT Router, PPPoE Client, Packet Filtering, QOS, DHCP Server/Client, Port Forwarding

Physical

Dimensions	320 mm X 320 mm X 100 mm
Operating / Storage Temperature	-40°C - +70°C / -40°C - +85°C
Enclosure	IP65 Rated, UV Protected, Outdoor Mountable, Weather Protected
Power Adapter	12V / 1.2A DC, Active Ethernet (Power over Ethernet Injector included)
LEDs	3 – Power, Ethernet LAN Activity, Wireless Activity
Mounting	Adjustable Mast Mounting

Antenna

Type	23dBi Flat Panel Antenna	
Built-in Antenna Patterns	 <p style="text-align: center;">E-Plane</p>	 <p style="text-align: center;">H-Plane</p>

Operational Distance

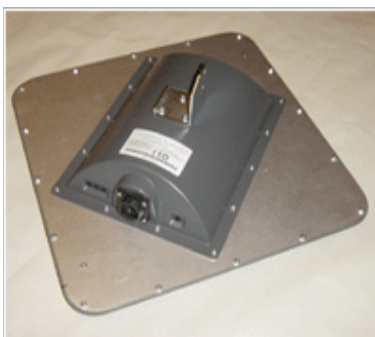
Bit Data Rate	54Mbps	48Mbps	36Mbps	24Mbps	18Mbps	12Mbps	9Mbps	6Mbps
Operational Distance	3200 m.	4300 m.	5900 m.	7200 m.	9100 m.	11200 m.	16000 m.	19500 m.

Regulatory Compliance

	CE mark, ETSI EN 301 893 Compliant, FCC Part 15 Compliant
--	---

Warranty

	One year, Limited
--	-------------------



Contact Information:

OSLiNK Sp. z o.o.
ul. Jana Pawła II 6C
89-604 Chojnice
Poland

tel. +48-52-3962500
fax. +48-52-3962501

sales e-mail: sales@osbridge.com
technical enquiries: support@osbridge.com
<http://www.osbridge.com>